

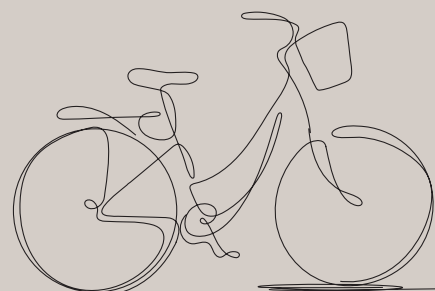
NORTHBOURNE VILLAGE

WALKING AND CYCLING GUIDE EXPLORE THE WETLANDS AND NATURAL SURROUNDS THAT BALANCE THE URBAN LANDSCAPE

THE **NV** OF CANBERRA

Northbourne Village has an excellent network of shared paths and identified routes on its doorstep. Some are visible from the road, others ‘hidden’ among the quiet neighbourhood streets—but both provide pleasant rides to get you to your destination, and back home again.

Make walking and cycling part of your regular routine at Northbourne Village.



NORTHBOURNEVILLAGE.COM.AU

PRESENTED BY **JWLAND**

SCAN TO LEARN MORE



NEW ROUTE NEW ACTON

A 10-15min cycle from NV

Hop on your bike and after you’ve exited Northbourne Village, hang left from De Burgh Street onto Wattle Street and, you’ll soon join the bike path. As you wind through Haig Park and Turner, you’ll emerge at Barry Drive. From there, you can take a short pedal through the Australian National University campus, or head left and down Marcus Clarke Street. Both will take you towards the New Acton precinct. Here you can enjoy a well-deserved breakfast and coffee, dinner, or screening at Palace Electric Cinemas.



SHORT VENTURE CANBERRA CENTRE

B 7min cycle from NV

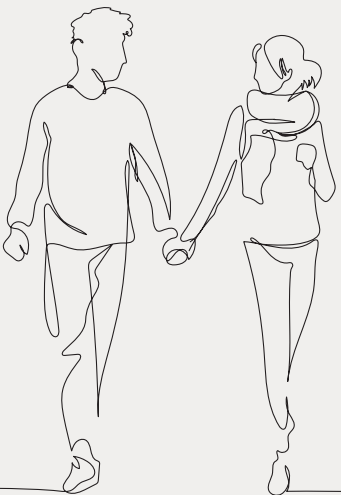
One of the easiest routes from Northbourne Village. Turn right from your doorstep onto Northbourne Avenue, and a slight slope will guide you down Canberra’s main thoroughfare. Turn left on Cooyong Street, or detour through the bustling streets of Braddon. Once you’re in the city, the Canberra Centre hosts an outstanding array of quality retailers, and first class entertainment.



TAKE IT SLOW BOTANICAL GARDENS

C 15min cycle from NV

Escape to a breathtaking array of native plants in a spectacular bushland setting. From Northbourne Village, weave your way from Wattle Street and head straight down David Street, turning left onto Froggatt Street. Take care crossing Barry Drive, follow Clunies Ross Street, and you’ll soon find yourself at the gateway to the world’s most comprehensive display of Australian native plants.



LEISURELY STROLL LYNEHAM SHOPS

F 15min walk from NV

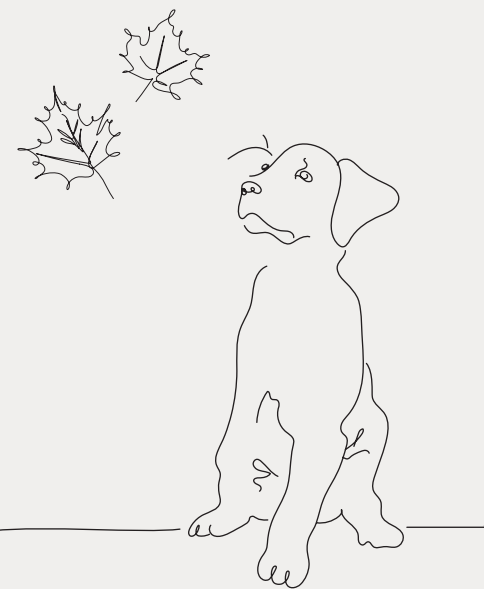
Curl through Owen Crescent, around the Lyneham Wetlands and up along Wattle Street. Along the tree-lined road you’ll spot a wide range of housing from 1940s weatherboards to ultra-modern minimalist designs. Once you reach the Lyneham shops, head to Tilley’s Devine Café for coffee or pop into The Front Gallery—a mixed purpose hospitality and arts space.



OFF LEASH INNER NORTH DOG PARK

E 20-30min walk from NV

Inner North dog park provides a large open space for energetic off leash games. The park features two segregated enclosures for large and smaller dogs with good shade provided by mature eucalypts, and a mix of grass and woodchip surfaces. Spend a morning walking your pup along MacArthur Avenue and be there in under half an hour, or hop on a bike and be there in 10 minutes.



SUMMER COOLDOWN DICKSON POOL

G 5min cycle from NV

Cross Northbourne Avenue and travel alongside Sullivan’s Creek. After bearing left onto Cowper Street, you’ll spot the Dickson Aquatic Centre ahead. The variety of pools, splash park and BBQ areas set among a canopy of trees make it the perfect place to swim, play or relax in the warmer months.

GET FRESH AT THE FARMERS MARKET

H 10-12min cycle from NV

Wake up early on a Saturday morning and you can sample the region’s freshest produce at the largest farmers market in the region. Take a short bike ride from Northbourne Village—ideally with an empty basket—along Northbourne Avenue and the Federal Highway to meet over 100 stallholders each week who offer their freshly picked and locally grown produce.



SUBURBAN FAVOURITE AINSLIE SHOPS

D 5min cycle from NV

After an early left from Northbourne Village and onto Wakefield Avenue, traverse between Majura Oval and Alan Ray Oval. Continue to twist along Wakefield Avenue’s heritage road through to Wakefield Gradens and you’ll soon find yourself at the rear of Ainslie Shops—a suburban tasting plate of Canberra, and home to an array of local small businesses including its renowned Ainslie IGA with ‘that’ cheese section.

TRAVERSE
CULTURES
DICKSON

J 4min cycle from NV

Whether you like to explore curious cuisine or prefer tried-and-true dishes, there will always be something new to find when you journey to Dickson. The long-standing restaurants offer some of the most authentic cuisine in Canberra, at affordable prices. You won't need to travel far from Northbourne Village for a unique, culinary experience.



BUSTLING
BRADDON

K 5-6min e-scoot from NV

Canberra's ever-evolving eclectic suburb of Braddon has transformed over the past decade from being a light industrial area into a vibrant precinct—you'll find a lively assortment of cafés, restaurants and boutique shopping. Thanks to Beam Mobility and Neuron Mobility who operate in Canberra under the shared e-scooter scheme, if you hop on an orange or purple e-scooter you'll be home at Northbourne Village in less than eight minutes via Henty Street or Northbourne Avenue.



BOUNDLESS
BRUCE RIDGE

N 10-12min cycle from NV

A variety of activities are permitted on Bruce Ridge including walking, trail running, orienteering, and most commonly, mountain biking. From Northbourne Village, twist your way through the neighbourhood past the O'Connor Tennis Club, and enter via Dryandra Street. From there, Bruce Ridge consists of singletrack trails with flowing sections and minor technical challenges on a mapped network with a series of signposts.



NEXT STOP
NEXT GEN

L 7min cycle from NV

Follow the trail of Sullivan's Creek—or keep it simple up Northbourne Avenue—and turn left onto Mouat Street. You'll pass the National Hockey Centre and Netball ACT among the playing fields before arriving at Next Gen. This state-of-the-art facility opens up a whole new world of health, lifestyle and relaxation. For tennis enthusiasts and casuals, players have access to 32 tennis courts, including an indoor tennis centre. Once you're done, there's also a restaurant and bar.

ORIGINAL
O'CONNOR
SHOPS

M 5min cycle from NV

Leafy is often an overused term, however in the case of neighbouring O'Connor it is definitely a fitting description. From Northbourne Village, zip down Wattle Street and head along tree-lined David Street to the O'Connor shops—you'll find IGA, Flatheads, Tu Do Vietnamese, Urban Jungle florist, Kopiku and The Duxton, featuring Canberra's only true rooftop terrace featuring its own bar, grass underfoot and retractable roof.

